

The place to learn all about our upcoming events and find out what's new at Athlos



NEWS

DECEMBER DATES TO KNOW:

DECEMBER 3

- Second Quarter Interim grades
- Monthly Recognition and PBIS Celebration

DECEMBER 10

- Canned Food Drive Ends

DECEMBER 16

- Early Release, Teacher P.D.
- Coffee & Chat Special Edition: Triton Express Family Event
4:30 - 7p.m.

DECEMBER 17

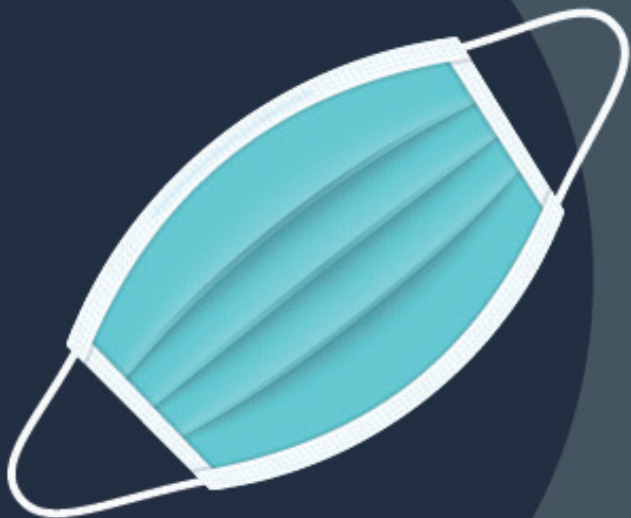
- Early Release, Teacher P.D.

DECEMBER 20-31

- No School

JANUARY 3

- No School, Teacher P.D.



Face Coverings Required

Please send extra face coverings with your children.





POINTS OF PRIDE

GREAT THINGS ARE HAPPENING AT ATHLOS ACADEMY OF JEFFERSON PARISH!



VOLUNTEERISM

Athlos students and teachers raised over \$750 for CAGNO through our Pink Out! day to spotlight and support breast cancer research



PERFORMANCE CHARACTER TRAITS SHINING THROUGH

Two of our eighth grade students displayed initiative and bought shoes for one of their classmates, these Athlos students are also demonstrating Humility by remaining anonymous and letting their actions speak for themselves.

QUIZ BOWL

Triton Quiz Bowl team entered into the Fall Masters Classic Quiz Bowl competition just two weeks after returning to campus after Hurricane Ida. Using Grit, Energy and Zest, the Tritons defeated schools from 15 states and 2 countries to become National Champions. Congrats to Mr. Spano and the Triton Quiz Bowl Team.



ATHLOS FAMILIES ARE DEDICATED

We hosted our first Coffee & Chat of the 2021 school year where over 50 families turned out to hear more about the Athlos Model, school-wide updates, and ask questions to school administrators.

**WE LOOK FORWARD TO SEEING YOU AT THE NEXT COFFEE & CHAT -
DECEMBER 16, 4:30-7 P.M.**



Athlos Academy
JEFFERSON PARISH

979 Behrman Highway, Terrytown, LA 70056
info@athlosjp.org | (504) 512-0984

Food Drive



REMINDER:

The Canned Food Drive will end December 10. Please donate canned food for the community. Thank you!

STUDENT SPOTLIGHT NOMINATIONS

**Calling All Students Who Have
Attended Athlos 2+ Years!**

We are excited to celebrate our students during the 2021-22 school year. This year, we want to celebrate our Athlos students, starting with the students who have been at Athlos for two or more years.

We will feature Student Spotlights with photos and first names on our website, social media and emails. If you would like to participate, please complete this form. We will use your student's school photo unless you want to send additional photos to Heather Crocker, Athlos Recruitment and Communications Director, at hcrocker@athlosacademies.org.

Help us celebrate the reason we are all at Athlos - our Amazing Athlos students!
Thank you for participating by nominating your student below.

<https://forms.office.com/>



**ATHLOS
STUDENT SPOTLIGHT**

Haleigh
GRADE 3

What do you like about Athlos?

What I like about Athlos is the math and also social studies! My teacher Mrs. DuPont is very nice and does fun things.



Open Enrollment

BEGINS
JANUARY 3

OPEN ENROLLMENT STARTS JANUARY 3, 2022

Starting January 3, 2022, we are accepting enrollment applications from new students entering grades K-8 at Athlos! Enrollment is open to children living in Jefferson Parish and all surrounding parishes.

For the best chance of becoming an Athlos student, submit your application before the lottery on March 9. If you submit your application after March 9, your student may be added to a wait list.

Current students do not need to re-apply.

ATHLOS SCHOOL

TOURS

MONDAY - FRIDAY, 9 - 11A.M.
WEDNESDAY, 4 - 5P.M.

Tours are by appointment. Email info@athlosjp.org or call Angela Hernandez at (504) 290-2510





DECEMBER BREAKFAST MENU

MONDAY	TUESDAY	WEDNESDAY	THURSDAY	FRIDAY
		1 Egg and Cheese Sandwich, Fresh Fruit and Fruit Juice	2 Maple Waffle Chicken Sausage Sandwich, Fresh Fruit and Fruit Juice	3 French Toast Sticks, Fresh Fruit and Fruit Juice
6 Cinnamon Toast Crunch Cereal, String Cheese, Fresh Fruit and Fruit Juice	7 Maple Pancake Chicken Sausage Sandwich, Fresh Fruit and Fruit Juice	8 Banana Muffin, String Cheese, Fresh Fruit and Fruit Juice	9 Chicken Biscuit, Fresh Fruit and Fruit Juice	10 Cinnamon Rolls w/Icing, Fresh Fruit and Fruit Juice
13 Cinnamon Toast Crunch Cereal, String Cheese, Fresh Fruit and Fruit Juice	14 Blueberry Muffin, String Cheese, Fresh Fruit and Fruit Juice	15 Egg and Cheese Sandwich, Fresh Fruit and Fruit Juice	16 Maple Waffle Chicken Sausage Sandwich, Fresh Fruit and Fruit Juice	17 French Toast Sticks, Fresh Fruit and Fruit Juice
20 No School Winter Break	21 No School Winter Break	22 No School Winter Break	23 No School Winter Break	24 No School Winter Break
27 No School Winter Break	28 No School Winter Break	29 No School Winter Break	30 No School Winter Break	31 No School Winter Break

- Fruit and Veggies are Served with Every Meal
- Free Breakfast and Lunch for All Students
- USDA is an Equal Opportunity Provider
- Menu items are subject to change

Student Meal Prices:

Breakfast: \$1.60 | **Reduced Breakfast: 30¢**
Lunch: \$2.60 | **Reduced Lunch: 40¢**

Student Drink Prices:

Milk: 30¢ | **Juice: 30¢** | **Water: 30¢**



PAY FOR MEALS ONLINE
[MySchoolBucks.com](https://www.MyschoolBucks.com)



DECEMBER LUNCH MENU

MONDAY	TUESDAY	WEDNESDAY	THURSDAY	FRIDAY
		1 BBQ Chicken Thigh, Mac and Cheese, BBQ Baked Beans, Seasoned Green Beans and Fresh Fruit	2 Turkey and Cheese on Ciabatta Bread, Seasoned Corn and Fresh Fruit	3 Hamburger w/French Fries, Lettuce, Tomato and Pickle, Ketchup, Mayo and Fresh Fruit
6 White Beans w/Smoked Turkey Sausage and Rice, Carrots w/Ranch, Cornbread and Fresh Fruit	7 Turkey Nachos - Soft Tortilla, Cheese, Lettuce, Seasoned Corn and Salsa and Fresh Fruit	8 Herb Roasted Chicken w/Rice and Gravy, Seasoned Peas, Biscuit, Mixed Salad w/Carrots and Italian Dressing and Fresh Fruit	9 Lasagna - Layered Pasta and Cheese w/Meat Sauce with Seasoned Green Beans, Breadstick and Fresh Fruit	10 Cheese Pizza, Romaine Lettuce w/Shredded Carrots, Italian Dressing and Fresh Fruit
13 Red Beans w/Smoked Turkey Sausage and Rice, Carrots w/Ranch, Cornbread and Fresh Fruit	14 Turkey Tacos - Soft Tortilla, Cheese Lettuce, Seasoned Corn and Salsa, Black Beans and Fresh Fruit	15 Gumbo w/Chicken and Smoked Turkey Sausage, Brown Rice, Wheat Crackers, Mixed Salad w/Diced Tomatoes, Italian Dressing and Fresh Fruit	16 Turkey Roast w/Gravy, Carrot Soufflé, Brown Rice, Sweet Potatoes and Fresh Fruit	17 Chicken Tenders, Potato Wedges, Ketchup, Carrots w/Ranch and Fresh Fruit
20 No School Winter Break	21 No School Winter Break	22 No School Winter Break	23 No School Winter Break	24 No School Winter Break
27 No School Winter Break	28 No School Winter Break	29 No School Winter Break	30 No School Winter Break	31 No School Winter Break

- Fruit and Veggies are Served with Every Meal
- Free Breakfast and Lunch for All Students
- USDA is an Equal Opportunity Provider
- Menu items are subject to change

Student Meal Prices:

Breakfast: \$1.60 | Reduced Breakfast: 30¢
Lunch: \$2.60 | Reduced Lunch: 40¢

Student Drink Prices:

Milk: 30¢ | Juice: 30¢ | Water: 30¢



PAY FOR MEALS ONLINE
MySchoolBucks.com

TRITON EXPRESS

SPECIAL EDITION - FAMILY EVENT



COFFEE & CHAT



THURSDAY, DECEMBER 16 4:30 - 7:00 PM

The Culture Committee is organizing a Gingerbread House competition, board games, hot chocolate and cookies for this family event. Students may wear school-appropriate pajamas.



Athlos Academy
JEFFERSON PARISH

979 Behrman Hwy.
Terrytown, LA 70056
(504) 290 - 2510
info@athlosjp.org



PINK OUT FOR CANCER OF GREATER NEW ORLEANS

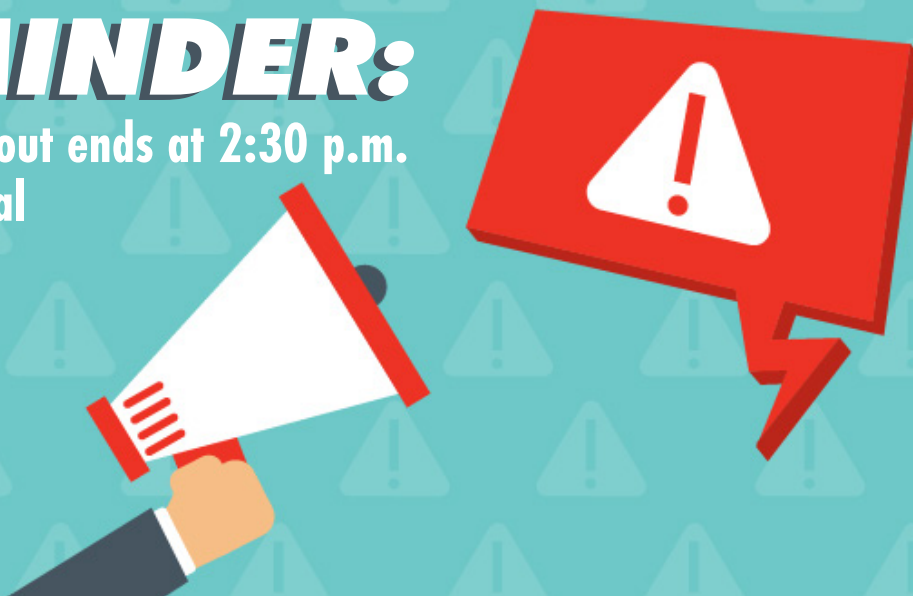
We had a great Pink Out and students raised money for the Cancer Association of Greater New Orleans - CAGNO. The top three classes were Ms. Robert's sixth grade, Ms. Catchings' third grade, and Ms. Parker's first grade. Thank you to everyone who participated.

Second Grade Field Trip to Audubon Aquarium of the Americas



REMINDER:

Early checkout ends at 2:30 p.m.
for dismissal



Athlos Academy of Jefferson Parish 2021-2022 Calendar

First day of school	Thursday, August 5	Grades 1-8
First day of kindergarten	Thursday, August 12	Kindergarten
No school	Monday, September 6	Labor Day
No school	Tuesday, September 7	Teacher P.D.
No school	Monday, October 11-12	Fall Break
No school	Friday, October 22	Teacher P.D. (makeup for 7th)
No school	Monday, November 1	Teacher P.D.
No school	Tuesday, November 2	Conferences
No school	Monday, Nov 22 – Friday, Nov 26	Thanksgiving Break
Half day	Thursday, December 16	Early Release/Exams
Half day	Friday, December 17	Early Release/Exams
No school	Monday, Dec 20 – Friday, Dec 31	Winter Break
No school	Monday, January 3	Teacher P.D.
No school	Friday, January 14	Conferences
No school	Monday, January 17	Martin Luther King Jr. Day
Half Day/Conferences	Friday, February 25	Half Day / Teacher P.D.
No school	Monday, Feb 28 – Friday, March 4	Mardi Gras Break
No school	Monday, March 21	Teacher P.D. / Conferences
No school	Friday, March 25	Conferences
No school	Friday, April 15 – Tuesday, April 19	Spring Break
Half day	Wednesday, May 25	Early Release/Exams
Last day of school	Thursday, May 26	Early Release/Exams



Athlos Academy of Jefferson Parish

2021-2022 Calendar

July 2021						
Su	M	Tu	W	Th	F	S
				1	2	3
4	5	6	7	8	9	10
11	12	13	14	15	16	17
18	19	20	21	22	23	24
25	26	27	28	29	30	31

August 2021						
Su	M	Tu	W	Th	F	S
1	2	3	4	5	6	7
8	9	10	11	12	13	14
15	16	17	18	19	20	21
22	23	24	25	26	27	28
29	30	31				

September 2021						
Su	M	Tu	W	Th	F	S
			1	2	3	4
5	6	7	8	9	10	11
12	13	14	15	16	17	18
19	20	21	22	23	24	25
26	27	28	29	30		

October 2021						
Su	M	Tu	W	Th	F	S
					1	2
3	4	5	6	7	8	9
10	11	12	13	14	15	16
17	18	19	20	21	22	23
24	25	26	27	28	29	30
31						18

November 2021						
Su	M	Tu	W	Th	F	S
	1	2	3	4	5	6
7	8	9	10	11	12	13
14	15	16	17	18	19	20
21	22	23	24	25	26	27
28	29	30				

December 2021						
Su	M	Tu	W	Th	F	S
			1	2	3	4
5	6	7	8	9	10	11
12	13	14	15	16	17	18
19	20	21	22	23	24	25
26	27	28	29	30	31	

January 2022						
Su	M	Tu	W	Th	F	S
						1
2	3	4	5	6	7	8
9	10	11	12	13	14	15
16	17	18	19	20	21	22
23	24	25	26	27	28	29
30	31					18

February 2022						
Su	M	Tu	W	Th	F	S
		1	2	3	4	5
6	7	8	9	10	11	12
13	14	15	16	17	18	19
20	21	22	23	24	*25	26
27	28					

March 2022						
Su	M	Tu	W	Th	F	S
		1	2	3	4	5
6	7	8	9	10	11	12
13	14	15	16	17	18	19
20	21	22	23	24	25	26
27	28	29	30	31		

April 2022						
Su	M	Tu	W	Th	F	S
					1	2
3	4	5	6	7	8	9
10	11	12	13	14	15	16
17	18	19	20	21	22	23
24	25	26	27	28	29	30

May 2022						
Su	M	Tu	W	Th	F	S
1	2	3	4	5	6	7
8	9	10	11	12	13	14
15	16	17	18	19	20	21
22	23	24	25	26	27	28
29	30	31				

June 2022						
Su	M	Tu	W	Th	F	S
			1	2	3	4
5	6	7	8	9	10	11
12	13	14	15	16	17	18
19	20	21	22	23	24	25
26	27	28	29	30		

First day of school	First day of kindergarten	No school	Instructional Days Missed	Half day *Teacher P.D.	No school - Teacher P.D.	No school - conferences	Last Day Half Day
---------------------	---------------------------	-----------	---------------------------	------------------------	--------------------------	-------------------------	-------------------

Fall semester	08/05/21 – 1/14/22	Schedule (grades K-8)	Mon – Fri 8:00AM – 3:15PM
Spring semester	01/17/22 - 05/26/22	Early Dismissal	8:00 AM – 1:30 PM
Quarter 1	08/05/21 – 10/22/21	Earliest drop off	7:40 AM
Quarter 2	10/25/21 – 1/14/22		
Quarter 3	01/17/22 – 03/25/22		
Quarter 4	03/28/22 – 05/26/22		
Total school days / hours	163 / 1072		